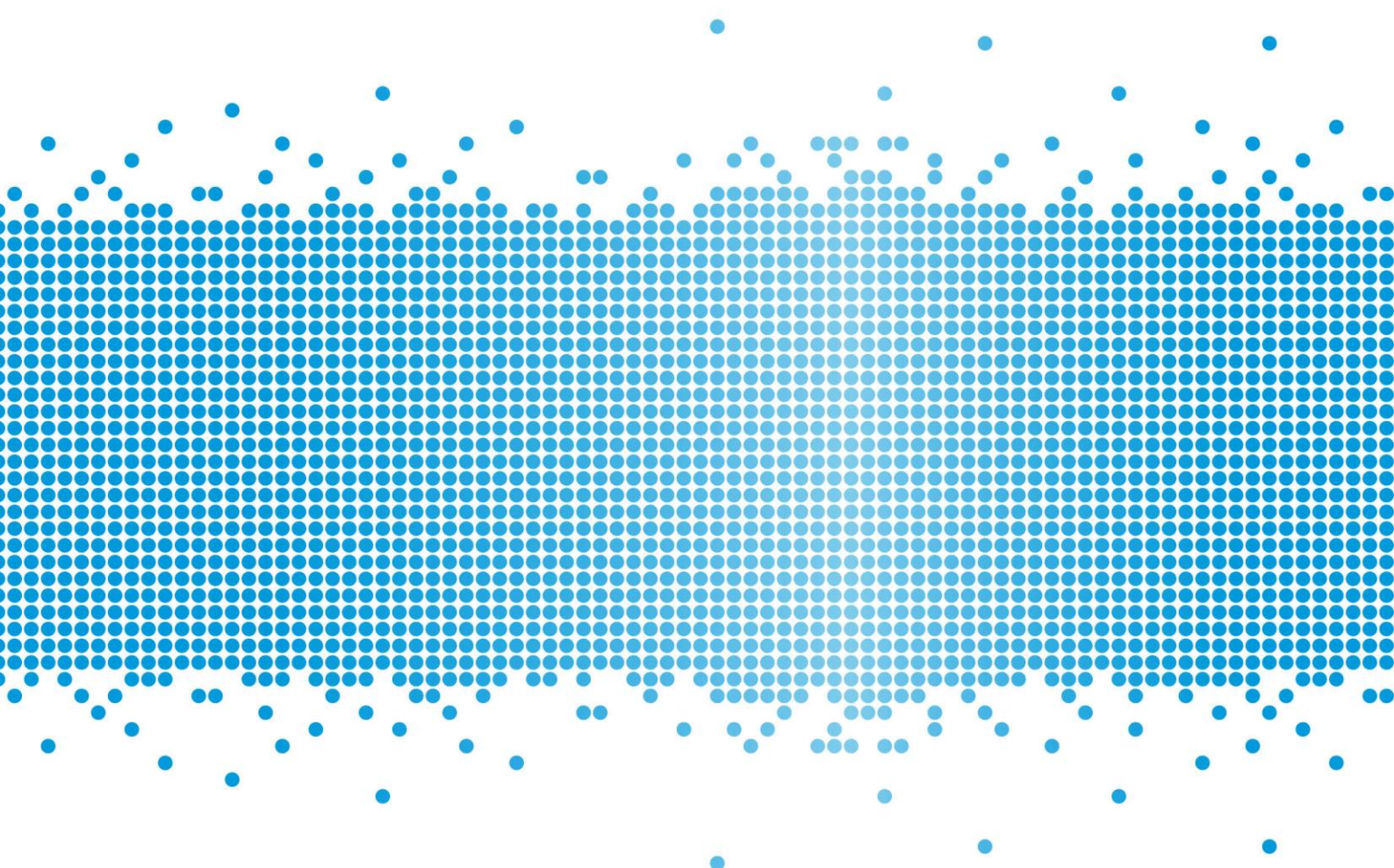


# Financial Services and Credit Guide

CAPITAL WEALTH ADVISERS PTY LTD

Version: 13.0

Date prepared: Monday, 6 December 2021



This Financial Services and Credit Guide (FSCG) contains information that will help you decide whether to use the financial services we offer. It sets out:

- who we are and how we can be contacted
- the advice and services we provide
- information about our licensee Charter Financial Planning Limited (Charter)
- our fees and how we, your adviser and Charter, are paid in connection with those services
- how we manage your private information
- how you can complain about a matter relating to us or Charter

## Documents you may receive

We will provide you with a number of documents as you progress through our financial planning process to capture each stage of your advice journey. We may provide these documents to you electronically to your nominated email address, unless otherwise agreed.

When we provide personal advice it will normally be documented and provided to you in a Statement of Advice (SOA), known as a financial plan. The financial plan contains a summary of your goals and the strategies and any financial products we may recommend to achieve your goals. It also provides you with detailed information about product costs and the fees and other benefits we and others will receive, as a result of the advice we have provided.

If we provide further personal advice a financial plan may not be required. We will keep a record of any further personal advice we provide you for at least seven years after our relationship ends. You may request a copy of such records by contacting our office during that period.

If we recommend or arrange a financial product for you we will provide a product disclosure statement (PDS) or investor directed portfolio service (IDPS) guide where relevant. These documents contain the key features of the recommended product, such as its benefits and risks as well as the costs you will pay the product provider to manage that product.

You should read any warnings contained in your advice document, the PDS or IDPS guide carefully before making any decision relating to a financial strategy or product.

### **Not Independent**

Generally, we provide personal advice in line with our Approved Product and Services List (APSL) which may include financial products and services associated with the licensee. We may receive commissions from life insurance products we recommend and non-monetary benefits such as training and educational seminars from product providers. For these reasons, we are not considered independent, impartial, or unbiased.

# About our practice

At Capital Wealth Advisers, we strive to provide excellence in service. Our team is dedicated to achieving our client's life goals with innovative long-term strategies. We believe all aspects of our lives are interconnected thus we only provide comprehensive holistic advice. We specialise in providing dynamic investment advice that is tailored to each individual client. This allows us to assist our select clients achieve their life goals, while protecting their assets.

## Summary of the business

Name	Capital Wealth Advisers Pty Ltd as Trustee of the mse family trust
Australian Business Number	77 686 179 613
Australian Company Number	602 744 383
Authorised representative number	1007240

## Our office contact details

Address	Suite 301 373 King Street, Melbourne VIC 3000
Phone	(03) 9328 1442
Email	contact@capitalwealth.co
Website	www.capitalwealth.co

This guide provides information about our advisers including their contact details, qualifications, experience, the services they may offer and financial products they can provide advice on.

## Our advice and services

We can provide you with personal and general advice about specific services and financial products listed below. We can also arrange for financial products to be issued without advice from us. In some cases, we may not be able to distribute a financial product to you under non-personal advice if your circumstances do not fit within a product's target market.

Individual advisers within our practice may not be qualified to provide advice in all of the services and products noted below. Their individual profile guides will note any limitations to the advice they are qualified to provide. At all times we will ensure the appropriate adviser is available to you to provide advice consistent with your goals.

The following table sets out the areas of advice we can help you with as well as the products and services we can arrange.

Any additional advice or services we can offer you, or limitations to the list below, will be outlined in **Our financial advisers and credit advisers** on page 12.

We can provide financial advice in relation to:	We can provide and arrange the following products and services:
— Investment strategies (strategic asset allocation)	— Superannuation, including retirement savings accounts
— Budget and cash flow management	— Self-managed superannuation funds (SMSF)
— Debt management (including borrowing for personal and investment purposes)	— Borrowing within your SMSF
— Salary packaging	— Employer superannuation
— Superannuation strategies and retirement planning	— Managed investments
— Personal insurance	— Deposit and payment products (for example term deposits, cash management accounts and non-cash payment products)
— Estate planning	— Standard margin loans
— Centrelink and other government benefits	— Retirement income streams, including pensions and annuities
— Aged care	— Personal and group Insurance (life cover, disability, income protection and trauma)
	— Life investment products including whole of life, endowment and bonds
	— Securities (including listed securities)
	— Exchange traded funds and Listed investment companies
	— Arranging for listed securities, shares and debentures to be bought and sold via a platform and broker.
	— Investor directed portfolio services
	— Limited selection of investment guarantees

Charter maintains an approved products and services list from a diversified selection of approved Australian and International providers, including companies related to Charter. These have been researched by external research houses as well as our in-house research team.

Charter periodically reviews these products to ensure that they remain competitive with similar products that address similar client needs and objectives. Generally, we recommend products that are on the approved products and services list. However, if appropriate for your needs, we may, subject to Charter's approval, recommend other products.

A copy of the approved products and services list can be supplied to you upon request.

If we recommend a new platform or portfolio administration service, we use those approved by Charter.

As at October 2021, the lenders whose products are most commonly recommended by accredited mortgage consultants authorised by Charter are ANZ, Macquarie Bank, NAB, AFG Home Loans, Commonwealth Bank and Bankwest.

## Tax implications of our advice

Under the Tax Agent Services Act 2009, Capital Wealth Advisers Pty Ltd is authorised by the Tax Practitioners Board to provide tax (financial) advice services on matters that are directly related to the nature of the financial planning advice provided to you. We will not consider any other tax matters in our advice to you. Where tax implications are discussed they are incidental to our recommendations and only included as an illustration to help you decide whether to implement our advice.

## Transaction services

We can arrange to complete transactions for you on limited types of financial products where we can take your instructions and arrange for the transaction to be completed, without providing personal advice. If you wish to proceed without our advice, we will ask you to confirm your instructions, which will be documented in writing. We will keep a record of this documentation for seven years after the end of our relationship. You may request a copy of such records by contacting our office during that period.

## Your relationship with us and using our services

You can contact us directly with any instructions relating to your financial products. This includes giving us instructions by telephone, mail or email. We can only accept your instructions via email once you have signed an authority form.

We will work with you to agree what advice and services we will provide and when and how often we will provide them.

Where you agree to annual advice and services, the details will be documented and provided to you in an advice or service agreement. This includes the frequency of contact between us, service standards that may apply, any fee arrangements and how the agreement can be terminated.

If at any time you wish to terminate your relationship with us, please contact us using the details shown in this guide.

## Providing information to us

It is important that we understand your circumstances and goals, so that we can provide you with appropriate advice and services. You have the right not to provide us with any personal information. Should you choose to withhold information, or if information you provide is incomplete or inaccurate the advice or services we provide you may not be appropriate for you.

It is also important that you keep us up to date by informing us of any changes to your circumstances so we are able to determine if our advice continues to be appropriate.

## Our fees

The actual fee charged to you will depend on the nature of the advice or service we provide. We will discuss and agree the actual fees with you before we proceed. The following section outlines the types of fees that may apply.

The fees charged for our advice and services may be based on a combination of:

- A set dollar amount; or
- A percentage based fee.

Our agreed advice and service fees may include charges for:

- Initial advice;
- Ongoing advice and services
- Annual advice and services

Please note that for services in relation to insurance and some credit products, commissions may be paid by the product provider as follows:

- Initial commission - a percentage of the value of your loan balance or insurance premiums; and
- Ongoing commission - a percentage of the value of your outstanding loan amount or premiums, usually calculated at the end of each month in which you hold the loan, or on renewal of insurance products.

### Payment methods

We offer you the following payment options for payment of our advice and service fees:

- BPAY, direct debit (savings), credit card or cheque; and
- Deduction from your investment (subject to the advice and service provided).

All permissible fees and commissions will be paid directly to Charter as the licensee. It will then pass on the amounts due to us through its payment system. Charter charges our practice a Licensee Fee each year. The Licensee Fee is determined as an annual amount based on a number of factors, including our business revenue, the number of advisers and/or accredited mortgage consultants in the practice and a practice fee.

For more information on our services, please see our **Schedule of fees** attached or available on request.

### Fixed service fees

We offer the following services at these fees:

Service	Fee amount
Initial Advice Fee's (Includes Research, Preparation and Implementation of advice)	Starting from \$550.
Ongoing Service Package (Gearing)	Up to \$10,000 per annum.
Annual Advice Review and Service Package (Fixed Fee)	From \$330 to \$15,000 for a 12-month period.

## Other costs

Where other costs are incurred in the process of providing our advice and services to you, you will be liable for these costs. However, we will agree all additional costs with you prior to incurring them.

## Other benefits we may receive

The following are monetary and non-monetary benefits we may receive other than those explained above. These are not additional costs to you.

In addition to the payments we may receive for our advice and services, we may receive other support services or recognition from the licensee to help us grow our business. This could include training, badging rights, technology, financing, events or other recognition we are eligible for. We may receive benefits from products that may include non-monetary benefits that are valued at less than \$300. We may also participate in business lunches or receive corporate promotional merchandise tickets to sporting or cultural events and other similar items.

### Development, management and advice (DMA) run off payments

Eligibility to receive DMA run off payments is dependent on us continuing to be authorised by and meeting standards set by Charter. From 31 January 2020 we will be eligible to receive run-off payments based on the amount of advice revenue we generated in 2018. Advice revenue includes revenue directly attributable to advice provided to a client for an agreed fee. It excludes commissions from investment, insurance and banking products. These payments are to assist with our cashflow over 3 years as set out in the table below. Run-off payments will not be made after January 2023.

Year	Total annual amount
2021	\$6,600.00
2022	\$3,300.00

### Buyout option

Where we request Charter to buy-back our business prior to 31 December 2021 and this is approved by Charter, then if we leave the financial services industry, we are eligible to sell the register rights of our client base to Charter. The valuation of these rights is based on a multiple of the annual financial planning revenue generated by our practice.

### Personal and professional development

Charter provides personal and professional development opportunities to us in the form of education and professional development programs, offered annually to qualifying practices.

### Business support

We may receive financial and non-financial assistance from the licensee including financing, technology support and marketing or other once-off transitional support costs, to help us grow our business or implement appropriate succession planning options.

Provided we met specific qualification criteria Charter will support our practice with up to \$3,750 per authorised representative that was with us in December 2017. This support is to assist us in meeting the training and education requirements for financial advisers as required by Financial Adviser Standards and Ethics Authority. Any support provided by Charter is paid directly to the education provider and not to us.

### Placement fees

From time to time Charter will receive fees from brokers or product issuers (including AMP group companies) for arranging client participation in Initial Public Offerings (IPOs) of financial products. The fee, which is generally a percentage of the fee paid to the broker, varies from offer to offer and by the level of participation by Charter. We may share in this fee based on the level of participation by our clients.

# Relationships and associations

It is important that you are aware of the relationships that Charter has with providers of financial services and products as they could be seen to influence the advice you receive.

## About our licensee

Charter Financial Planning Limited

ABN 35 002 976 294

Australian Financial Services Licensee and Australian Credit Licensee No: 234665

Charter:

- Approved the distribution of this guide
- Authorised us to provide advice and other services as described in this guide
- Authorised us to provide credit assistance services to you

Charter's registered office is located at 33 Alfred Street, Sydney, NSW 2000.

## About the AMP Group

Charter is a member of the AMP group of companies. We can provide advice on products from a wide range of financial product providers, some of which are related or associated with Charter namely:

- |  |   |
|--|---|
| — National Mutual Funds Management Limited | — AMP Capital Funds Management Limited                |
| — NMMT Limited                             | — AMP Capital Investors Limited                       |
| — N.M. Superannuation Pty Limited          | — AMP Superannuation Limited                          |
| — ipac asset management limited            | — Australian Securities Administration Limited (ASAL) |
| — AMP Bank Limited                         | — SuperConcepts Pty Ltd                               |
| — SMSF Administration Solutions Pty Ltd    |   |

If we recommend a product issued by the AMP Group or a third party product issuer, they will benefit from our recommendation by receiving product, administration and investment fees, as well as fees paid by fund managers to distribute their product. These fees are all disclosed in the relevant PDS or IDPS guide.

Authorised representatives and/or staff employed in our business may hold shares in AMP Limited, whose share price may be favourably affected by the sale of products issued by AMP Group companies.



## Our referral arrangements

Where you have been referred to us by someone else we may pay them a fee, commission or some other benefit in relation to that referral. Our current referral arrangements are detailed below:

Provider	Payment arrangement
Herman & Berry Accountants	We pay Herman & Berry Accountants a referral fee of 30% of any initial advice fees and ongoing service fees and/or upfront and ongoing commissions received by us. For example, if we charge you a fee of \$1,000, we would pay Herman & Berry Accountants a referral fee of \$300.
Jenny Kang (Mortgage Broking Services)	We pay Jenny Kang a referral fee of 20% of any initial advice fees received by us. For example, if we charge a fee of \$1,000, we would pay Jenny Kang a referral fee of \$200.
VIK Investments Pty Ltd (Mortgage Broking Services)	We pay VIK Investments Pty Ltd a referral fee of 30% of any initial advice fees and/or upfront commissions received by us. For example, if we charge you a fee of \$1,000, we would pay VIK Investments Pty Ltd a referral fee of \$300.
NS and Associates Pty Ltd	We pay NS and Associates Pty Ltd a referral fee of 30% of any initial advice fees and/or upfront commissions received by us. For example, if we charge you a fee of \$1,000, we would pay NS and Associates Pty Ltd a referral fee of \$300.
KD Advisory Pty Ltd	We pay KD Advisory Pty Ltd a referral fee of 20% of any initial advice fees and/or upfront commissions received by us. For example, if we charge you a fee of \$1,000, we would pay KD Advisory Pty Ltd a referral fee of \$200.

## Confidence in the quality of our advice

If at any time you feel like you are not satisfied with our services, the following will help you understand your options and find a resolution.

- Contact your adviser and tell them about your complaint.
- If your complaint is not satisfactorily resolved within three business days, please contact Charter:
  - Phone 1800 812 388
  - Email [advicecomplaints@amp.com.au](mailto:advicecomplaints@amp.com.au)
  - In writing:

### **Charter Financial Planning Limited**

#### **Attention: Head of Advice Complaints and Client Remediation**

33 Alfred Street

Sydney NSW 2000

- They will try to resolve your complaint quickly and fairly. They will provide you with a decision in respect to your complaint within 30 days of us receiving it.
- We note that in some circumstances, it may not be possible for us to completely resolve a complaint within this timeframe. If you do not agree with our decision in respect of your complaint, or are otherwise unsatisfied with our response, you may escalate your complaint to one of the following External Dispute Resolution Schemes listed below.

<b>Any issues relating to financial advice, investments, superannuation, insurance matters, or credit matters</b>	<b>Australian Financial Complaints Authority (AFCA)</b> GPO Box 3 Melbourne VIC 3001 1800 931 678 <a href="http://www.afca.org.au">www.afca.org.au</a> <a href="mailto:info@afca.org.au">info@afca.org.au</a>
<b>Any issue relating to your personal information</b>	<b>The Privacy Commissioner</b> GPO Box 5218 Sydney NSW 2001 1300 363 992 <a href="mailto:privacy@privacy.gov.au">privacy@privacy.gov.au</a>

You may also contact the **Australian Securities & Investments Commission (ASIC)** on 1300 300 630 (free call info line) to make a complaint and obtain information about your rights.

## Professional indemnity insurance

We maintain professional indemnity insurance to cover our advice and the recommendations provided by your adviser. Charter is also covered by professional indemnity insurance and this satisfies the requirements imposed by the Corporations Act 2001 and National Consumer Credit Protection Act. The insurance covers claims arising from the actions of former employees or representatives of Charter, even where subsequent to these actions they have ceased to be employed by or act for Charter.

# Your privacy

We are committed to protecting your privacy. Below we outline how we maintain the privacy of the information we collect about you.

## Privacy collection statement

As part of the financial planning process, we need to collect information about you. Where possible we will obtain that information directly from you, but if authorised by you we may also obtain it from other sources such as your employer or accountant. If that information is incomplete or inaccurate, this could affect our ability to fully or properly analyse your needs, objectives and financial situation, so our recommendations may not be completely appropriate or suitable for you.

We are also required under the Anti-Money-Laundering and Counter-Terrorism Financing Act (AML/CTF) 2006 to implement client identification processes. We will need you to present identification documents such as passports and driver's licences in order to meet our obligations.

We keep your personal information confidential, and only use it in accordance with our Privacy Policy. Some of the ways we may use this information are set out below:

- Your adviser and Charter may have access to this information when providing financial advice or services to you;
- Your adviser may, in the future, disclose information to other financial advisers, brokers and those who are authorised by Charter to review customers' needs and circumstances from time to time, including other companies within the AMP group (the Group);
- Your information may be disclosed to external service suppliers both here and overseas who supply administrative, financial or other services to assist your adviser and the Group in providing financial advice and services to you. A list of countries where these service providers are located can be found in the Group Privacy Policy;
- Your information may be used to provide ongoing information about opportunities that may be useful or relevant to your financial needs through direct marketing (subject to your ability to opt-out as set out in the Group Privacy Policy); and
- Your information may be disclosed as required or authorised by law and to anyone authorised by you.

Your adviser and Charter will continue to take reasonable steps to protect your information from misuse, loss, unauthorised access, modification or improper disclosure. You can request access to the information your adviser or Charter holds about you at any time to correct or update it as set out in the Group Privacy Policy. The Group Privacy Policy also contains information about how to make a complaint about a breach of the Australian Privacy Principles.

For a copy of Group's Privacy Policy visit <http://www.amp.com.au/privacy> or you can contact us.

## Our financial advisers and credit advisers

# Our financial advisers and credit advisers

## About Mat Allday – Senior Financial Adviser, Practice Principal



Experience	Mat has over 15 years experience in the financial services sector. Working mainly for large banking institutions throughout his career, he has built a wealth of knowledge in all areas of personal and business wealth management that allows him to excel in this field.
Phone	0433 010 060
Email	mat.allday@capitalwealth.co
Authorised representative number	0340290
Credit representative number	369207

### Qualifications (Finance related)

Advanced Diploma of Financial Services (Financial Planning)

Certificate IV Financial Services (Finance/Mortgage Broking)

Bachelor of Finance

## The advice and services I can provide

I am authorised to provide the services listed in the **Our advice and services** section of this guide, except for the following:

- Estate planning (I am authorised to advise on a limited range of estate planning solutions related to your financial products)

Should you require advice and services that extend beyond my authority I can refer you to a suitably qualified professional.

I am also a credit representative of Charter and am authorised to provide strategic debt advice regarding how to structure debt, suitability of existing loan structures and repayment options. I am not authorised to provide credit assistance. If you require advice involving mortgages or other lending products, I can refer you to an accredited mortgage consultant.

## How I am paid

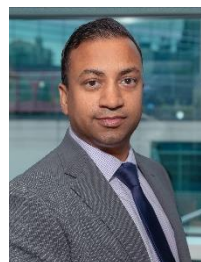
I receive the following from our practice:

- dividends
- equity in the practice

Based on the above, the following contains my remuneration details:

- Mat Allday is a director of Capital Wealth Advisers Pty Ltd, who has equity in the business and receives dividends from the practice.

## About Ashish Siddam - Senior Financial Adviser, Practice Manager



Experience	Ash has over 15 years of experience in financial services sector and has held senior positions in management, lending and financial advice. Ash has achieved quality outcomes for his clients through insights, expertise, coaching and service excellence.
Phone	0417 260 645
Email	ash@capitalwealth.co
Authorised representative number	1253657

### Qualifications (Finance related)

Diploma of Financial Planning

Advanced Diploma of Financial Planning

Certificate IV in Finance and Mortgage Broking

Bachelor of Business Administration (Hons)

Master of Business Administration

Master of Finance

## The advice and services I can provide

I am authorised to provide the services listed in the **Our advice and services** section of this guide, except for the following:

- Employer super
- Estate planning (I am authorised to advise on a limited range of estate planning solutions related to your financial products)

Should you require advice and services that extend beyond my authority I can refer you to a suitably qualified professional.

## How I am paid

I receive the following from our practice:

- salary

Based on the above, the following contains my remuneration details:

- Ashish Siddam is an employee of Capital Wealth Advisers Pty Ltd and receives a salary package.

## My other business activities and relationships

In addition to providing the services listed in this guide, I have a relationship with NATIONAL WEALTH GROUP PTY LTD. Charter has no involvement in these activities and is not responsible for any services, advice or products provided by this business.

I control a percentage of the equity interests in the business providing the services listed above. As

a result, I will benefit from fees, dividends or income received from the business's profits that may result from any payments or other benefits received in respect of the services provided to you.

## About Warwick Abbott - Senior Financial Adviser



Experience	Warwick has over 18 years of experience within the financial services sector. Over time, he has developed a holistic approach towards financial advice to deliver what is important. He is passionate about providing the best financial outcomes for his clients.
Phone	0425 764 232
Email	warwick.abbott@capitalwealth.co
Authorised representative number	1004158
Credit representative number	518956

### Qualifications (Finance related)

Advanced Diploma of Financial Services (Financial Planning)

## The advice and services I can provide

I am authorised to provide the services listed in the **Our advice and services** section of this guide, except for the following:

- Employer super
- Estate planning (I am authorised to advise on a limited range of estate planning solutions related to your financial products)
- Exchange traded funds (ETF) and Listed investment companies (LIC)
- Securities (including listed securities and debt securities)
- Self-managed super funds (SMSF)
- Borrowing within your SMSF – Limited Recourse Borrowing Arrangements (LRBA).

Should you require advice and services that extend beyond my authority I can refer you to a suitably qualified professional.

I am also a credit representative of Charter and am authorised to provide strategic debt advice regarding how to structure debt, suitability of existing loan structures and repayment options. I am not authorised to provide credit assistance. If you require advice involving mortgages or other lending products, I can refer you to an accredited mortgage consultant.

## How I am paid

I receive the following from our practice:

- salary

Based on the above, the following contains my remuneration details:

- Warwick Abbott is an employee of Capital Wealth Advisers Pty Ltd and receives a salary package.





## Schedule of fees

These prices should be used as a guide only. We will discuss your individual needs and agree our fees with you. The actual agreed fees will depend on factors such as the complexity of your circumstances and goals and the scope of the advice.

### Initial fees

These are fees paid when you have agreed to receive our advice:

Initial service	Fee amount
Initial Advice Fee's (Includes Research, Preparation and implementation of advice)	Starting from \$550

### Ongoing service fees

We provide ongoing services for clients with existing ongoing fee arrangements to help you stay on track to meet your goals. Our ongoing service fees vary depending on the scope and complexity of services provided. The cost of these services are as follows:

Ongoing service	Fee amount
Ongoing Services Package (Gold)	Up to 1.50% of funds under management (FUM) - Between 0.50% to 1.50% of the investment balance per annum. For example, if your investment balance was \$100,000 your annual fee would be up to \$1,000.
Ongoing Services Package (Platinum)	Up to 1.75% of funds under management (FUM) - Between 0.50% to 1.75% of the investment balance per annum. For example, if your investment balance was \$100,000 your annual fee would be up to \$1,750.
Ongoing Service Package (Gearing)	Up to \$10,000 per annum.

The amount of fees will depend on the service offering and these are provided in a separate advice or services agreement. Note that ongoing service are closed to new clients and are applied to existing 'ongoing advice agreements' prior to 1 March 2020.

### Annual advice and service fees

We also offer the following services for a fixed period of 12 months.

Service	Fee amount
Annual Advice Review and Service Package (FUM)	Between 0.50% pa to 1.50% pa of funds under management (FUM) for a 12-month period balance, For example, if your funds under management (FUM) was \$100,000, assuming the balance remains the constant, your fee for 12 months would be in the range of \$500 and \$1,500.
Annual Advice Review and Service Package (Fixed Fee)	From \$330 to \$15,000 for a 12-month period.

The amount of fees will depend on the service offering and these will be provided in a separate advice or services agreement.

## Commissions

We may receive commissions when implementing certain products for you, in line with the below. Any commission amounts will be disclosed to you when providing our advice. The following table is a guide of commissions we may receive.

Product type	Initial commission	Ongoing commission	Example
Insurance (including those held within superannuation)	Up to 66% of the first year's premium for new policies implemented from 1 January 2020.  We may receive commissions on increases or additions to existing policies of up to 130%.	Up to 33% of the insurance premium each following year.	On insurance policies implemented from 1 January 2020, if your insurance premium was \$1,000, we would receive an initial commission of up to \$660.  Ee would receive an ongoing commission of up to \$330.00 pa.

^ Until 1 February 2022, an aggregator fee of 1.5% is deducted by AFG before the remaining commission is passed on to us. From 1 February 2022, this fee will no longer be charged before we receive the commissions.

All fees and charges include GST.

If an agreed advice fee is charged then we may rebate all or some of the commission.